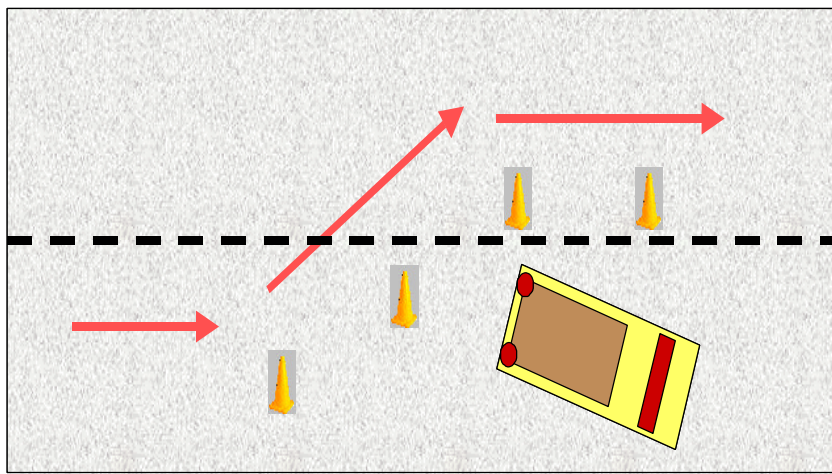


Roadway Operational Safety



Discussion

Firefighter injuries and fatalities while operating on roadways have increased significantly in the last 2 years. Many requests for emergency service require firefighters to position apparatus, operate apparatus and work near moving traffic. Every effort **must** be taken by the officer and crew to position effectively for operational safety. Using your department SOG's, discuss the appropriate positioning for apparatus at specific operational scenes.

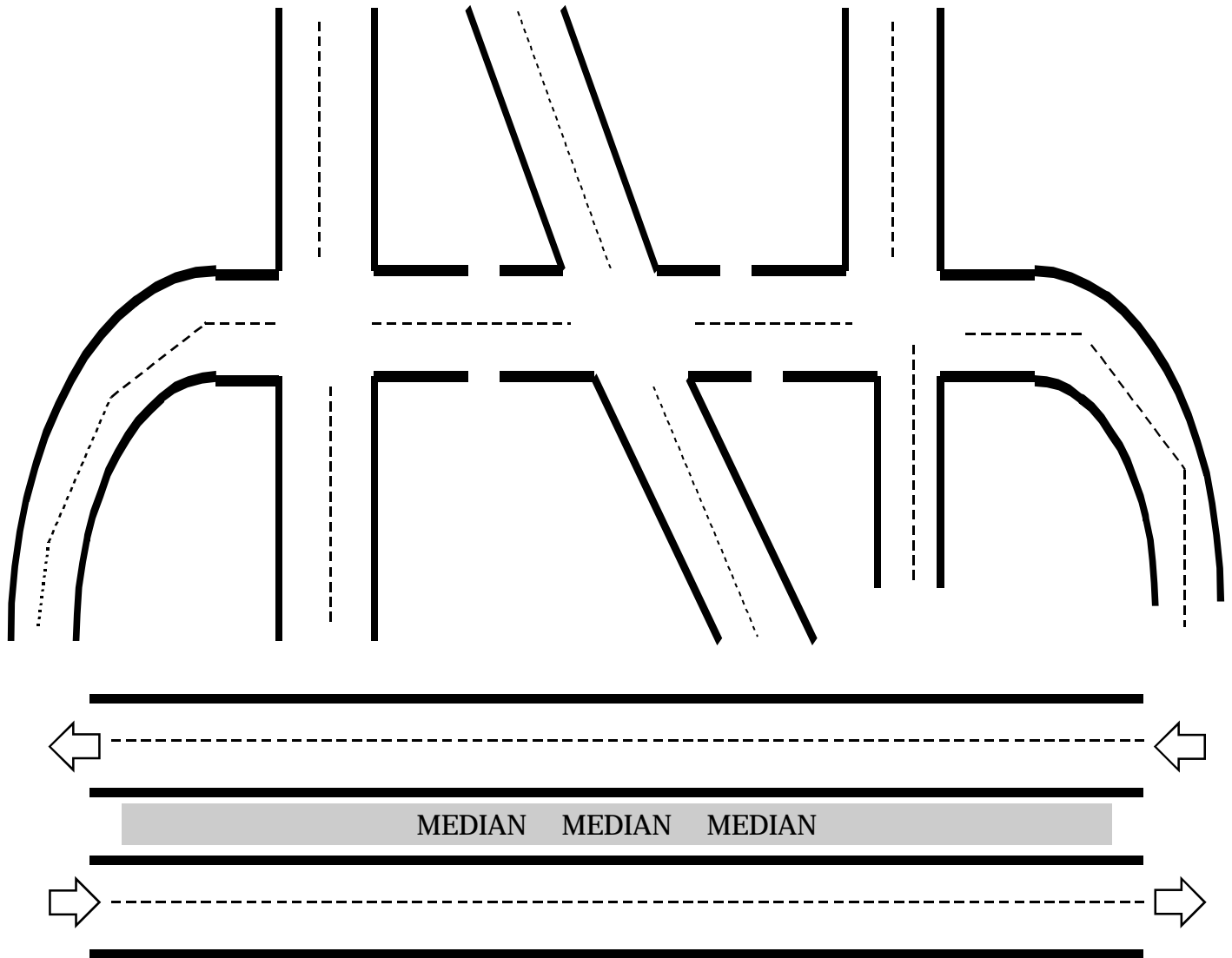
General Considerations

- Use apparatus as a shield
- Utilize cones, flares, and other diversion devices to control traffic flow
- Reposition apparatus/personnel if they are not in a safe position
 - If in doubt, shut down the traffic
 - Look in all directions before you step off apparatus and into traffic flow
- Wear protective clothing with reflective markings

Discussion Questions

Using the roadway diagram on page #2 and an erasable marker, diagram the following incidents and show the proper position of apparatus that would respond to that type of incident.

- Head-on auto accident on highway
- Auto accident in the middle of an intersection
- Car fire on shoulder of expressway
- Grass fire in median of the highway
 - Car off road in ditch
- Ambulance call on the highway



Show typical responding apparatus positions for the following operations:

- Head-on auto accident
- Auto accident in the middle of an intersection
 - Auto accident on a curve
- Car fire on shoulder of expressway
- Grass fire in median of the highway
 - Car off road in ditch
 - Ambulance call on the highway
- Fuel spill or suspected hazardous material incident

Review department procedures or accepted practices for each incident.